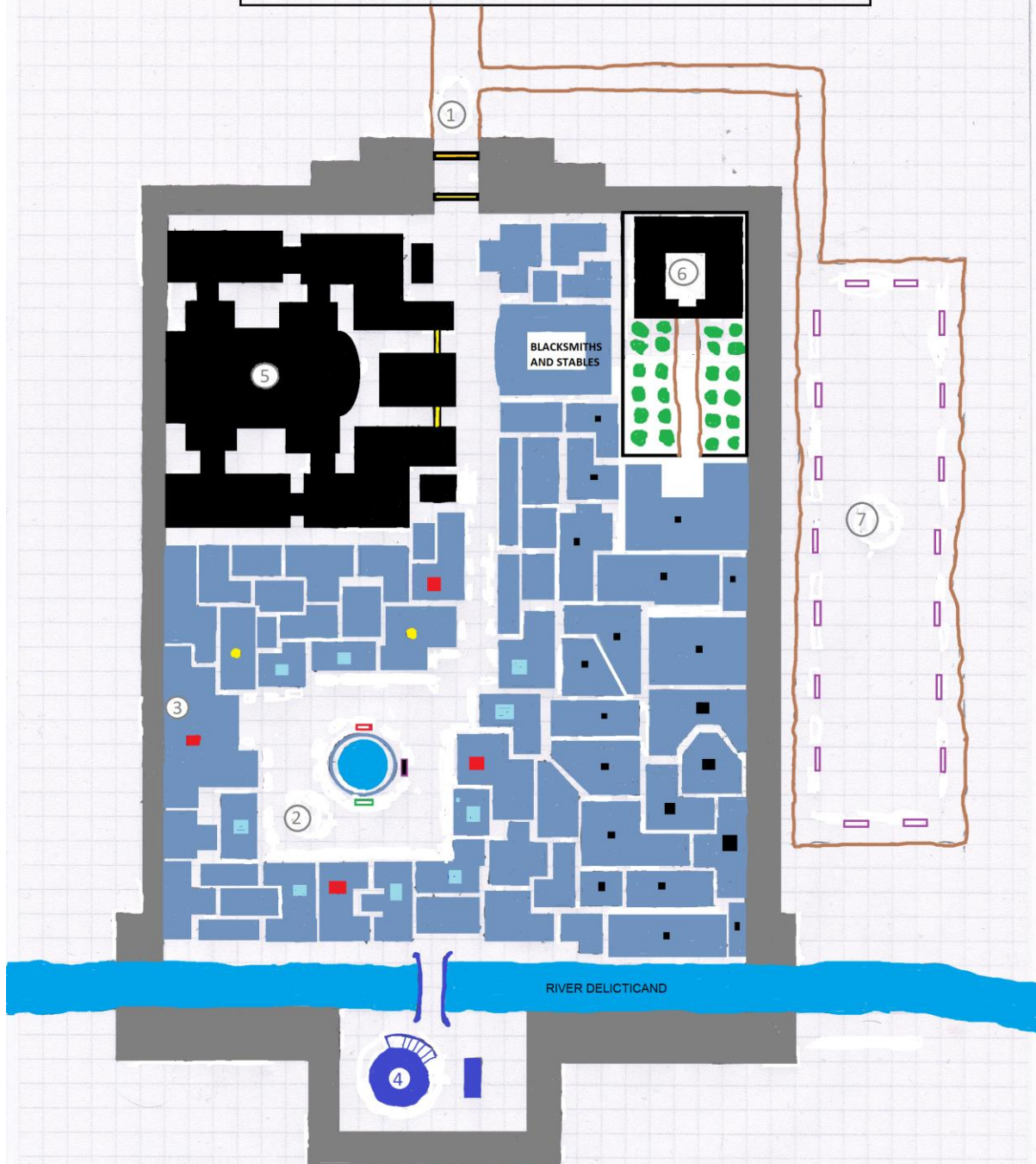
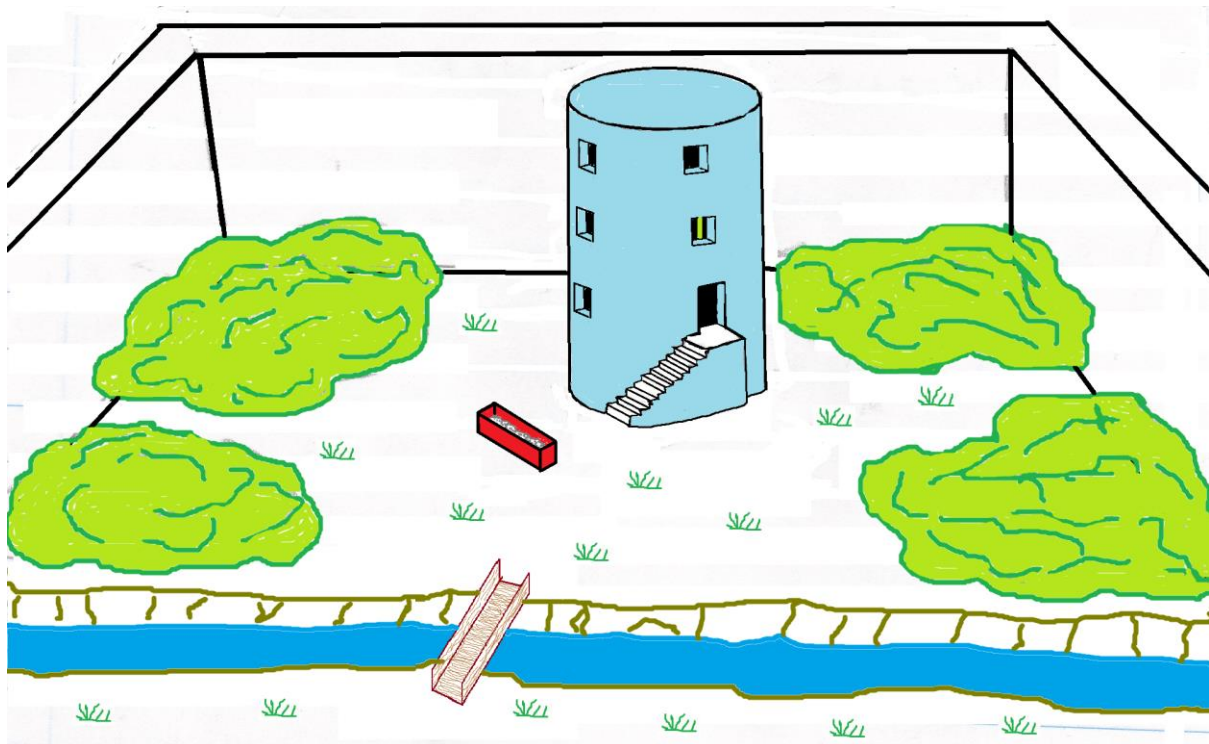
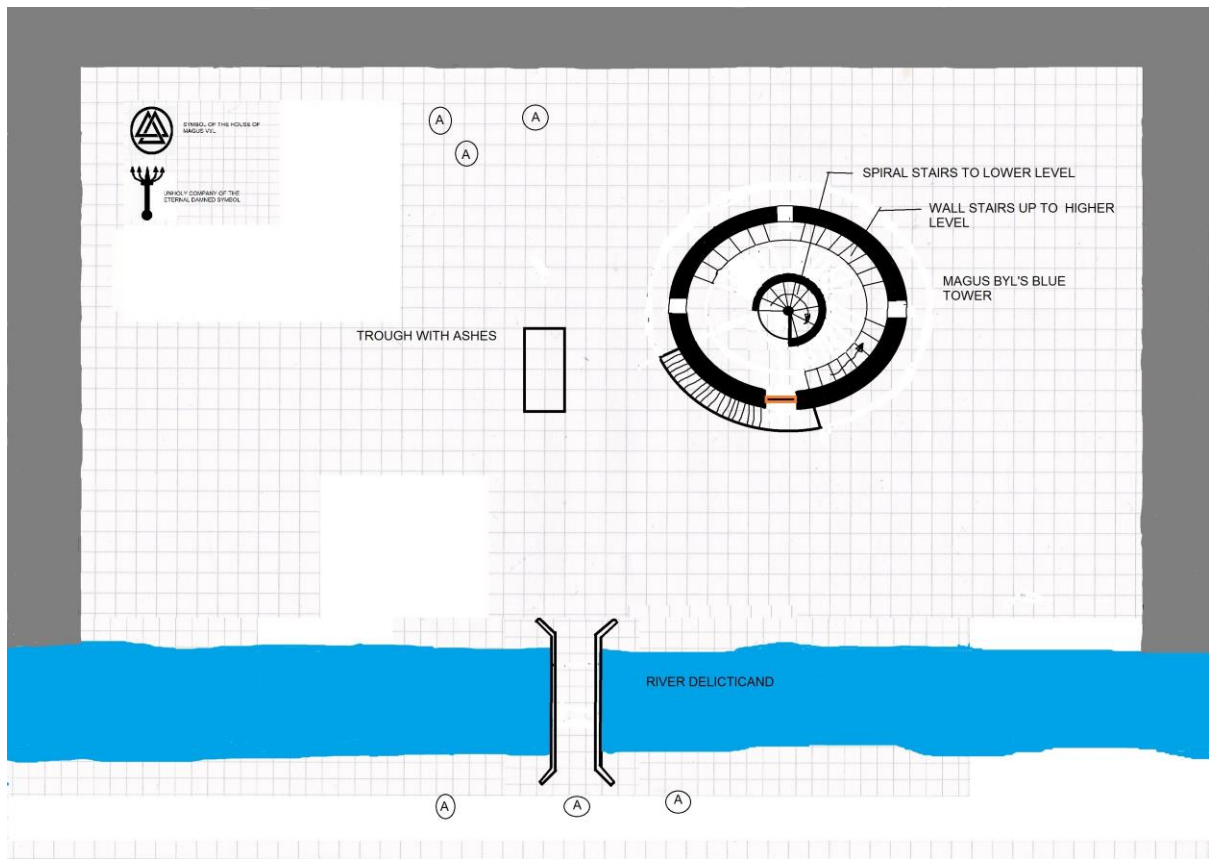


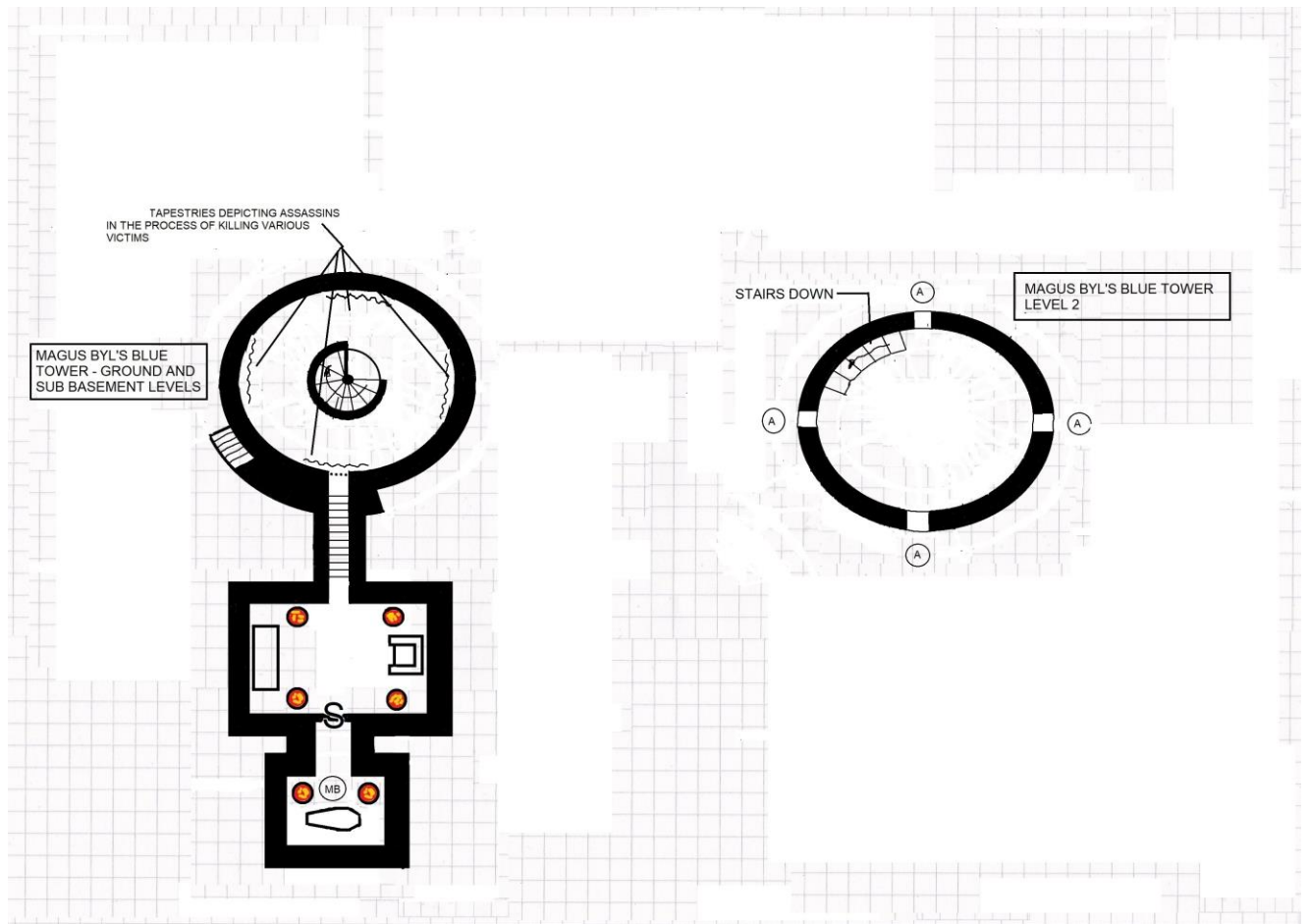
KALUGEN'S KEEP AND ENTRANCE TO THE BATTLEPITS



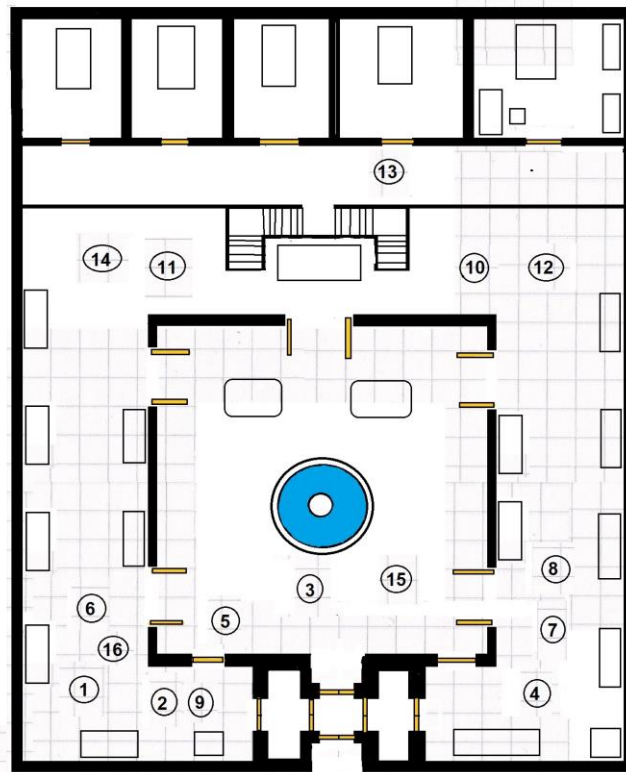
- 1 - THE MAIN ENTRANCE GATES
- 2 - MAIN SQUARE WITH THE MAGI BOOTHES
- 3 - INN OF THE FIVE STARS
- 4 - THE BLUE TOWER OF MAGUS VYL
- 5 - THE HOUSE OF FIVE FOLD TORMENTS AND THE HALL OF THE EMBALEM OF VICTORY
- 6 - MAGUS BALTHAZAR'S MANOR
- 7 - THE MAGI'S CHAMPION'S ENTRANCES TO THE BATTLEPIT

- MAGI ACCOMODATIONS
- STORES
- INN AND TAVERNS
- LIBRARIES





MAGUS BALHAZAR'S MANOR HOUSE



- 1 - man in sequine mask and jester's motley
- 2 - blonde wigged man dressed in mercanian reaver with a slime lady on his arm
- 3 - 2 men standing by the fountain in earnest conversation one in grey furs the other dressed in a bear costume
- 4 - a man in a domino cape romancing a girl in black velvet dress and a feline mask
- 5 - a gaunt man disguised in a violet face paint and purple robes
- 6 - a man wearing a green wig licking his lips as he talks to 2 servants
- 7 - a man dressed in blue robes rubs his hands together whilst contemplating food on a nearby table

(G)

(G)

(G)

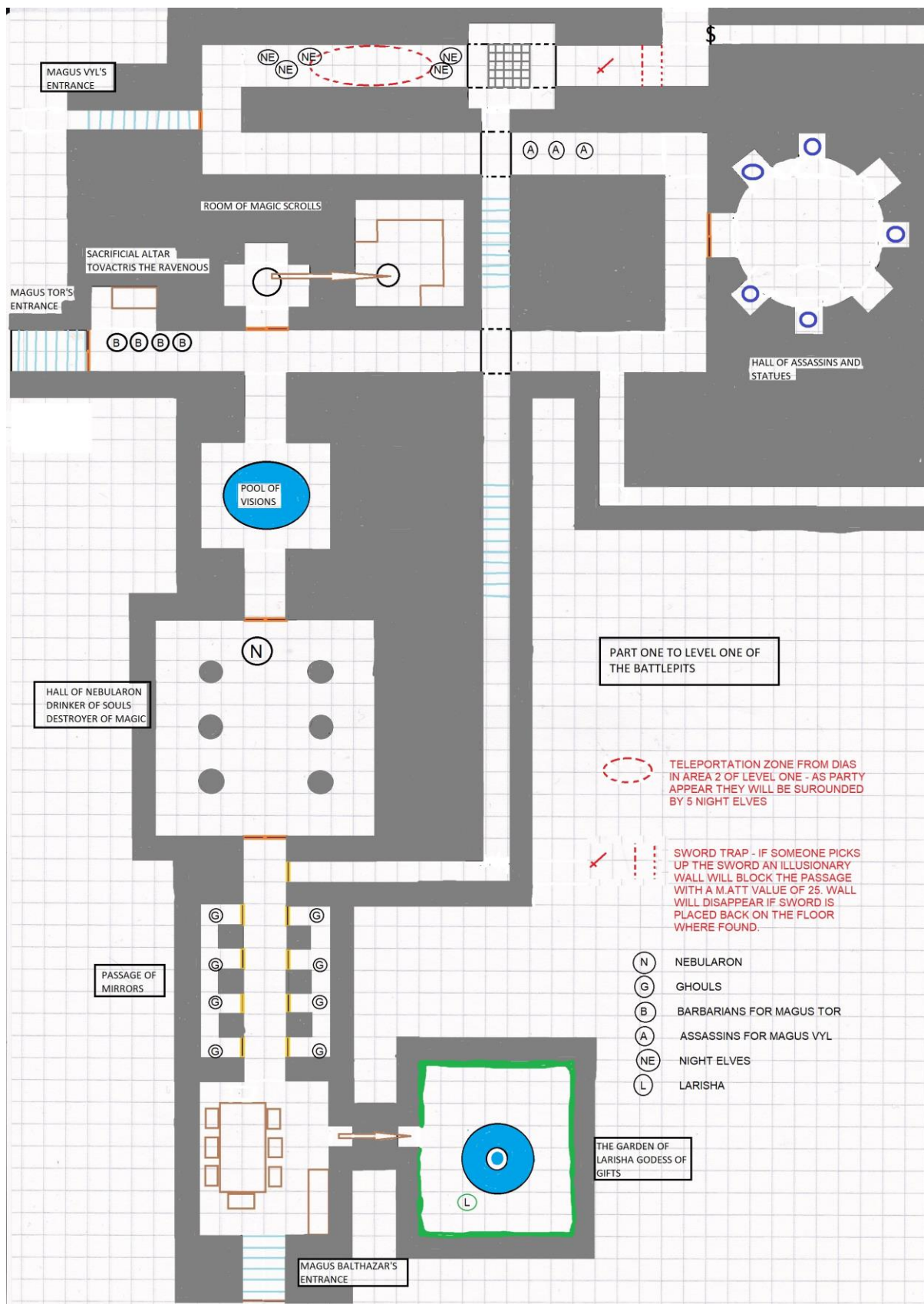
(G)

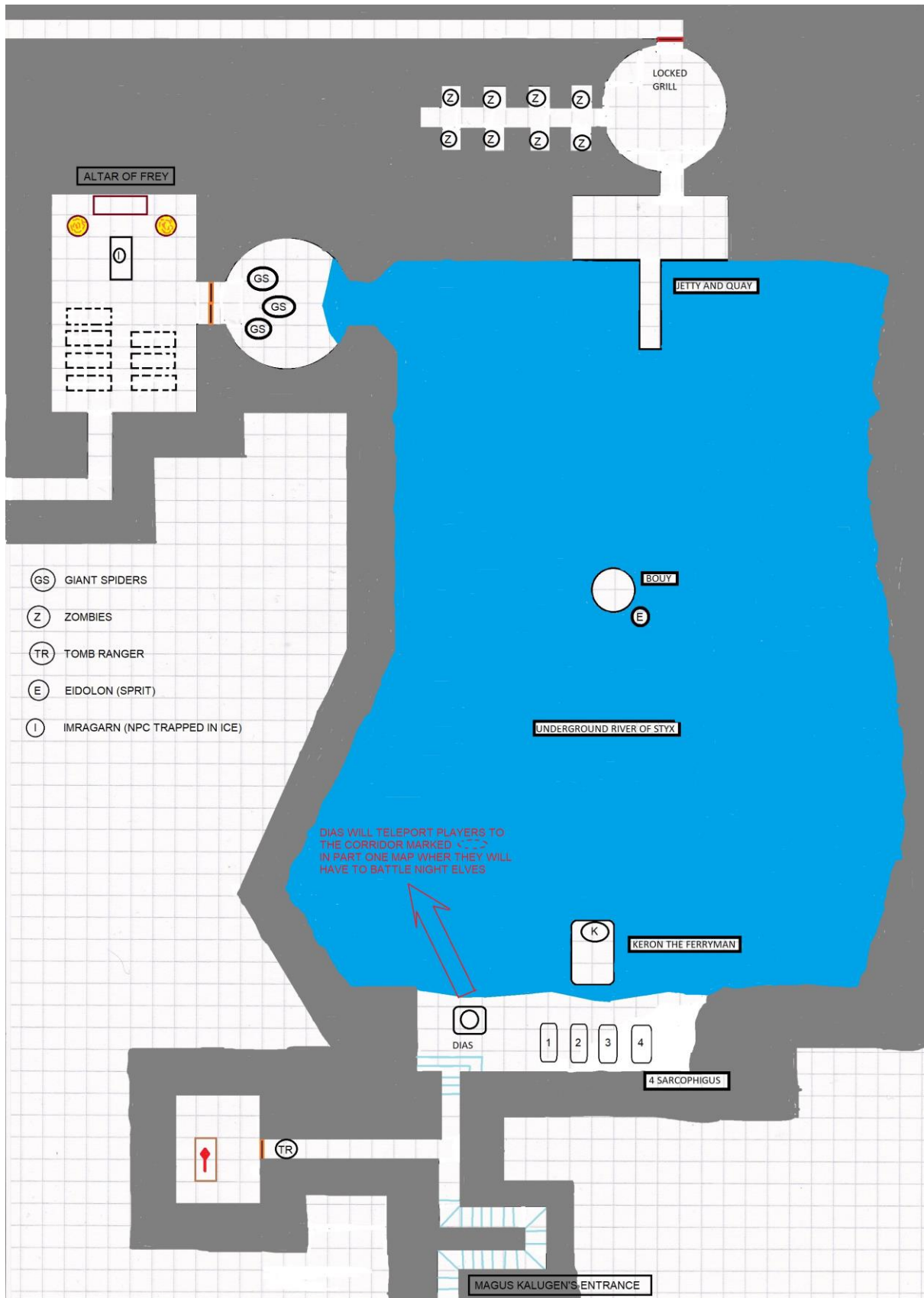
(G)

(G)

(G)

(G)





BATTLEPITS LEVEL ONE - SHEET 3 OF 5

